

# Mahony Hall

Orchestral concert hall with rear choir stalls

## Capacity

1210 in open orchestral platform configuration

1028 in Black Box Configuration.

## Stage

Orchestral Wooden platform with curved downstage edge and overhead wooden acoustic canopy.

Width upstage: 12m

Width Downstage: 20m

Depth: 12m

Height: 1m

Clearance to canopy: 10m

Clearance to rigging beams above canopy: 15m

(2m x 1m risers available on request)

## Rigging

Rigging only from five beams running upstage, downstage 2m apart from centre. Maximum weight per beam 2000kg .

## Mix Position

Rear of bleachers under balcony in seat rows V, W and X (42 seats used from room seating capacity) Mix size is 5m wide x 2m deep.

## Lighting System:

### **Desk:**

ETC Ion 1024 Channel Control Desk , ETC Console Colour Monitor , ETC Fader Wing



**Front truss:** 15m: 5 x 6 way bar par 64 cp 62. (15 dimmers available).  
Lamps paired per 6 way.  
8 x Source 4 Zoom 15-32 (8 dimmers available).

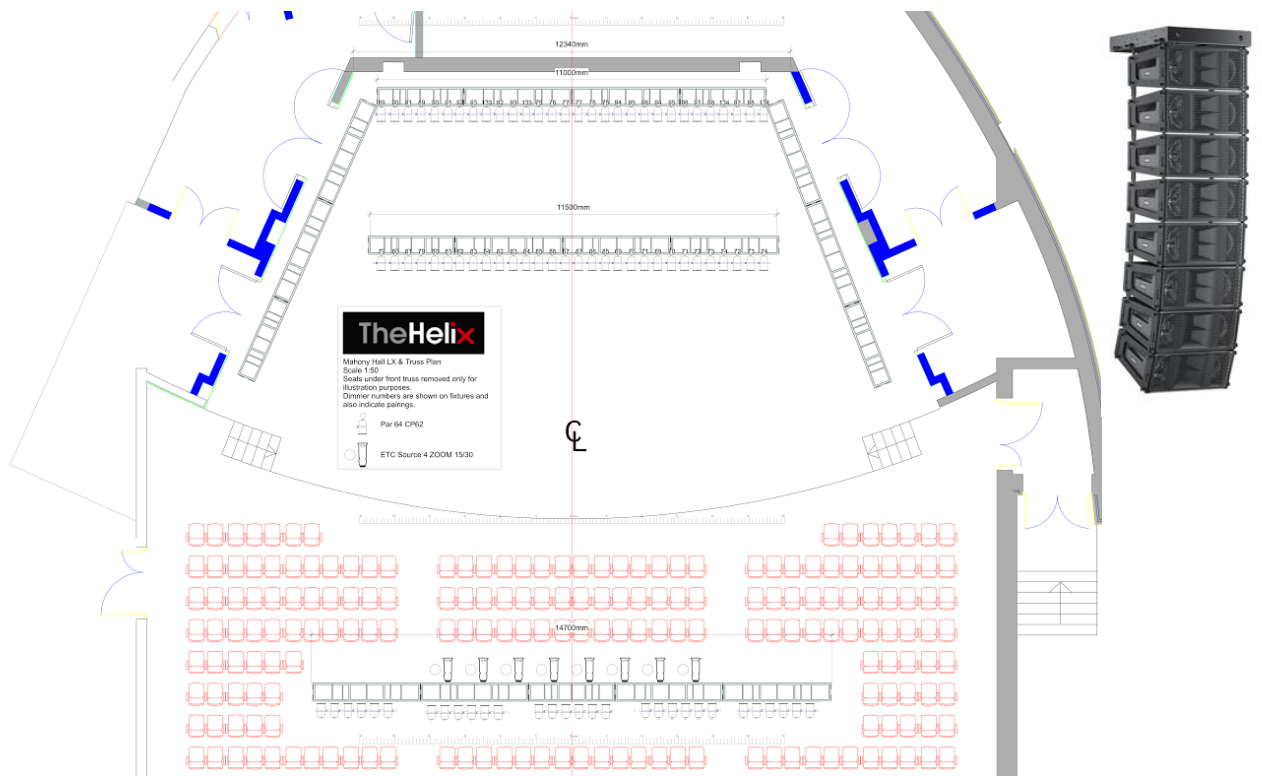
**Mid truss:** 11.5m: 5 x 6 way par 64 cp62. (15 dimmers available). Lamps paired per 6 way.

**Drapes truss:** upstage 11m, Stage left 9m, Stage right 9m. 5 x 6 way bar par 64 Cp 62. (15 dimmers available). Lamps paired per 6 way

**Floor layout:** 20 dimmers available on the floor. Some overlap.  
12 x snub nose par 64 Cp61.  
4 x 4 lites molephay

**Follow Spots:** 2x 2.5k Lycian 1290 XLT (house operators only)  
4 x 4 lites molephay

**Visiting Lighting /Rigging Power:** 200A / 3 Phase /220/315V. Connectors  
125amp-3phase & 32amp-3phase



## **Sound System**

- 14 x Meyer Sound M2D Line Array loudspeakers (7 per side flown)
- 4 x Meyer Sound M2D SUB (2 per side ground stacked)
- 2 x Meyer sound UPA-1P fills (1 per side ground stacked)
- 4 x Meyer Sound UPM-1P front fills (2 per side on stage lip)
- 4 x Meyer Sound UPM-1P (2 per side balcony fills)
- 4 x Sp X ACT full range loudspeakers (choir stalls fills)

## **FOH equipment**

Midas PRO 2 TP Digital mixing console  
Midas DL 251 Digital stage box (48 Input, 16 outputs)  
1 x XTA DP224 Speaker Management System  
1 x XTA DP226 Speaker Management System

### **Monitor Equipment**

6 x Meyer UM-1P stage monitors  
(Additional monitors available on request)  
Midas Legend 3000, 44/4 mixing console  
1 x KT Graphics Rack  
1 x KT compressor/Gate Rack  
1 x FX Rack  
48 ways of KT active microphone Splitters



### **Microphones**

6 X SM 58  
6 X SM 57  
6 X AKG 451  
6 x EV PL37  
6 x AKG CHM 99 B hanging microphones (Available on request)  
2 X AKG 414  
2 AKG C3000  
1 X D112  
2 X BETA 52  
1 x Sennheiser Drum Pack (Available on request)  
2 x Shure goose neck podium mics  
10 X KT Active DI  
24 X K&M Microphone stands  
Sennheiser Hand Held mics , Clip mics & Headset mics available for hire on request.



### **Intercom**

Canford system with 6 x belt packs & headsets.  
Show Relay to Dressing rooms, Green Room and Hallway.

### **Power**

Visiting Lighting Power 200A / 3 Phase / 220/315V. Connectors 125amp-3phase, 32amp-3phase

Visiting Sound Power 3 x 63A / Single Phase / 240V

OB1 outside broadcast power 32A or 63A or 125A / 3 Phase / 220/ 315 V

Switchable generator incoming power facility

Bus Power 16A / 32A / 63A 220V single phase available

Rigging power 32A / 220/315V 3 Phase on catwalk, stage end.

### **Load In**

Two truck dock at stage height, through double doors. 5m push to stage

