

## The Theatre

### **Proscenium arch theatre**

**Capacity:** 450

Stalls 277, Orchestra pit 46, balcony 119, accessible positions maximum 6

**Stage:** Wooden Platform painted black

Depth: 12m, Width: 22.5m, Height: 1m

**Pit:** Depth centre: 2.5m, Width stalls side 12.5m, width stage side 11.5m.

**Proscenium:** Width 12.5m, Height 6.5m

**Clearance:** Stage to grid 16m

### **Flys and Rigging:**

Single Purchase counterweight system

Fly bars @1,2,3,4,8,11,14,17,20,23,26,29,32,35,38,41,44,47,49,50

Maximum bar lifting capacity 500kg

Maximum bar point loading 100kg

Bar length 14.3m, bar extensions 1m.

Rigging from steel 2000kg max point on 7 x I beams 2m apart running upstage downstage @ 19m clearance from stage and 2m clearance from grid.

### **Drapes etc:**

White Cyclorama 15m x 7.5m

1 x Rear Full Black

2 x Black Tabs 2 x 9m , on bi parting Tab track 17mx7.5m

8 x Black legs 2.5m x 7.5m

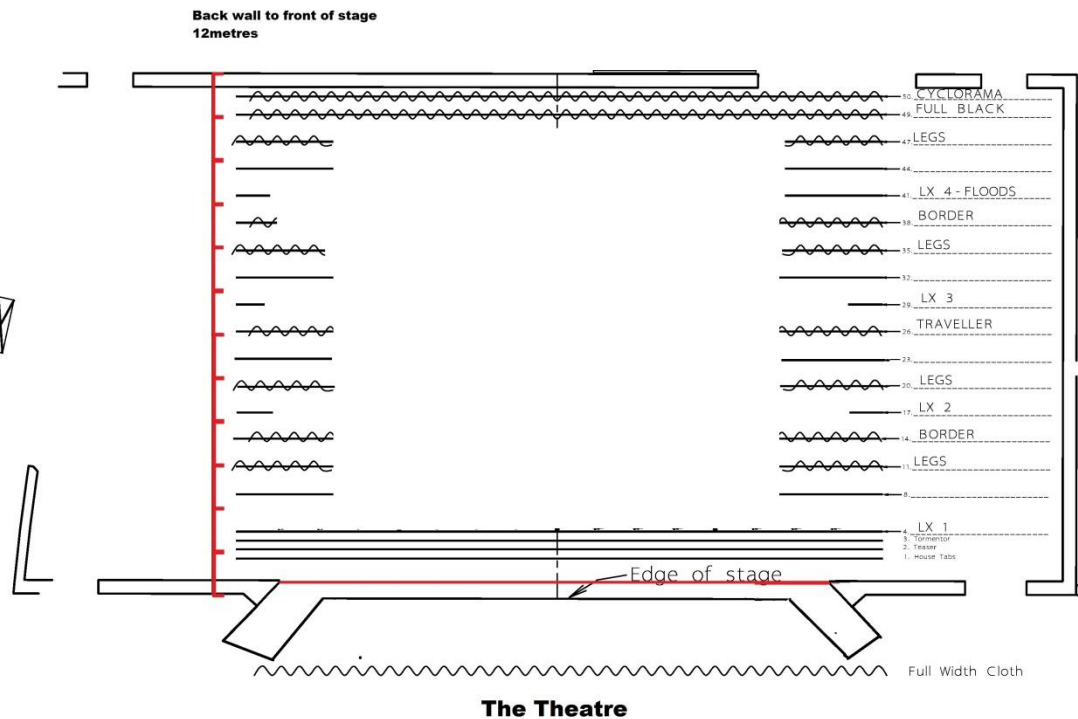
4 x 15m x 2.5m borders

4 x 5m x 7.5m side masking

1 x DA-LITE 20 x 11 heavy duty fast fold Cinema screen with front and rear projection fabric (Flown from a fixed position in the Theatre)

Red Velour house curtain, teaser and tormentors.

Fire Iron



## **Sound System**

Midas Venice 320 console (ground floor mix position)

Yamaha M2500 32ch console (booth mix position)

1 x outboard rack with graphics, dynamics, fx and playback.

## **Speakers**

2 x 18" subs ( 1 per side down stage left and right)

4 x SP2 full range (2 per side down stage left and right)

2 x SP2 full range (1 per side balcony fills)

2 x EV sxa 250 stage monitors

Various Mics, stands, cables available on request

Sennheiser Hand Held mics , Clip mics & Headset mics available for hire on request.

## **Intercom:**

ASL comms system with 6 belt packs and headsets.

## **Lighting**

### **Fixtures:**

36 x 1.2k strand cantata F  
20 x 750w source 4 zooms 15/30  
10 x 750w source 4 26 degrees  
26 x 1000w Par 64 cp 61  
5 x 1000w 4 cell cyc lites

### **Circuit Layout:**

LX 1, LX 2, LX3 & LX4 all have 18 circuits on each bar. This is not Dimmers

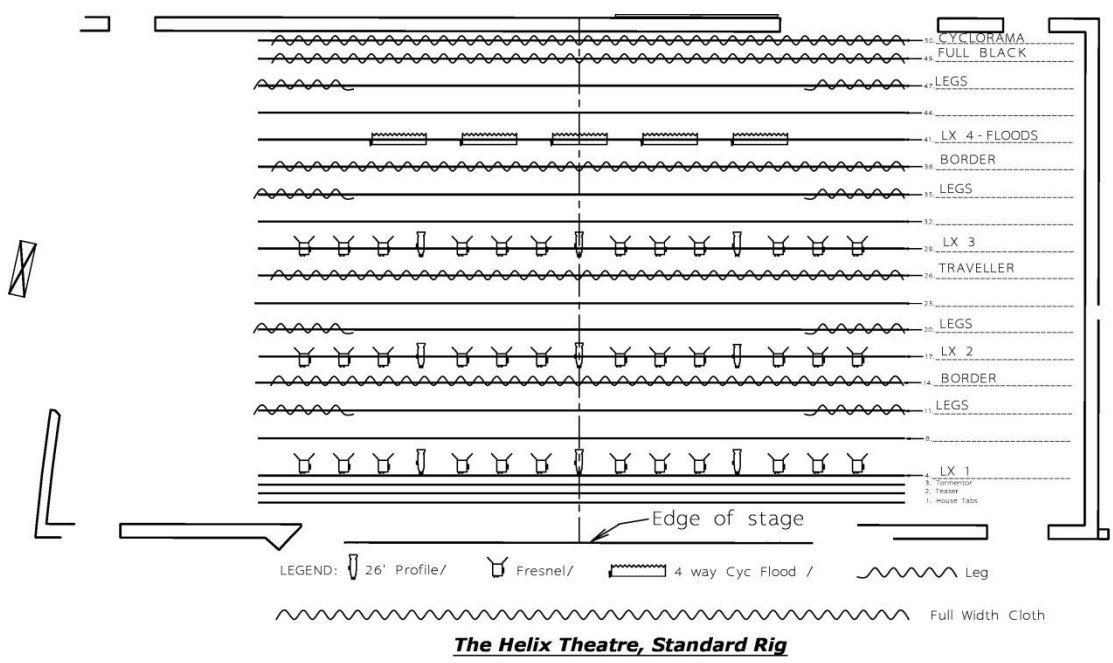
### **Dimmer layout:**

Overhead: 47 X 2.5k dimmers & 4 x 5k dimmers available for lx1, lx2, lx3 & lx4  
FOH: 30 X 2.5k dimmers  
Juliet Stage right & left: 6 X 2.5k dimmers each  
Floor/Stage area: 20 X 2.5k dimmers

### **Desk:**

ETC Ion 1024 Channel Control Desk , ETC Console Colour Monitor , ETC Fader Wing





**Power**

Lighting power: 200A, 220/315V, 3 Phase

Sound power: 1 x 63A single phase, 4 x 16A 220V single phase

Rigging power: 32A 220/315V, 3 phase in grid

**Load in:**

Stage level, truck to dock doors, 2m push to stage through upstage flats and roller doors.

**The Theatre Standard House Fly Bars Configuration**

1	House Curtain		18	No line		35	Legs
2	Teaser		19	No line		36	No line
3	Tormentor		20	Legs		37	No line
4	Lx1		21	No line		38	Border
5	No line		22	No line		39	No line
6	No line		23	Free Bar		40	No line

7	No line		24	No line		41	Lx4
8	Free bar		25	No line		42	No line
9	No line		26	M/S Black tabs		43	No line
10	No line		27	No line		44	Free bar
11	Legs		28	No line		45	No line
12	No line		29	Lx3		46	No line
13	No line		30	No line		47	Legs
14	Border		31	No line		48	No line
15	No line		32	Free bar		49	Full black
16	No line		33	No line		50	White cyc
17	Lx2		34	No line			